



Newfonic Clear Tube MRC Series

Setting up your MRC Series headset

1. Check whether your telephone requires an amplifier to be connected for your headset to operate. If so follow instructions enclosed with your amplifier.
2. If telephone has dedicated headset socket, then simply plug in headset at this point.
3. If your telephone does not have a dedicated headset socket you will need to utilise the existing handset socket. Simply unplug the handset and plug in the headset.

Quick Disconnect (Optional)

Your headset may be equipped with a Quick disconnect allowing you to walk away from your desk without removing your headset, freeing you to multitask.

- Before using your headset be sure the two halves of your Quick disconnect are connected.
- To unplug your headset, grasp either side of the Quick disconnect and pull apart.
- To resume your conversation, reconnect the two halves of the ADDQD.



1. Adjustable headband
2. Receiver (speaker)
3. Headset cable
4. Quick disconnect
5. Adjustable t-bar
6. Ear cushion
7. Voice tube
8. Clothing clip
9. Ear Hook (Optional)
10. ADDLOCK convertible button to switch between headband and ear hook



JPL Comms Ltd
Tel: 01258 820100
Fax: 01258 820550
www.jpltele.com



Adjusting the Microphone Boom

To adjust the voice tube, position the tube toward your mouth and adjust to be within 2cm of your mouth.

Adjusting the Clothing Clip

Fasten the clothing clip at a comfortable level. The cord should have sufficient slack so the headset is not disturbed by the movement of your head.

Safety Warning

Do not listen to headphones at high volume as such use can permanently damage your hearing. JPL Communications headsets are designed to produce a specific audio output level at maximum rated power. Many countries now have regulations defining the amount of noise that an individual can be subjected to during a normal workday. The duration of exposure, the level of ambient noise will affect compliance to these regulations. Compliance is application dependent and standards vary. It is the SOLE RESPONSIBILITY of the end user to determine applicability of and compliance to local hearing protection regulations. In addition if purchasing any JPL accessory which use earphone kits, it is the SOLE RESPONSIBILITY of the end user to determine proper fit. Always use caution when inserting any of the products into your ear.

Limited Warranty

Consequential and incidental damages, including without limitation, loss of property and those arising from breach of any express or implied warranty, are not the responsibility of JPL Communications and to the extent permitted by law, are excluded.

Adjusting the Headband

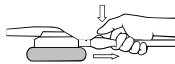
Place the headset receiver to your ear(s) and set the T-bar above your other ear. Adjust the clickstop headband until comfortable.

The Newfonic Pro Series may be worn on either ear. To switch sides, simply rotate the microphone boom to the other side.

Using the Optional Ear Hook

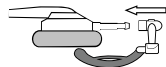
To remove the headband or the ear hook

Press the ADDLOCK button on the headband and pull it out from the receiver unit.



To attach the ear hook to headset

Push the ear hook into the receiver unit until it clicks into place.



Adjusting the Ear Hook

The ear hook is flexible and can be molded for optimum comfort.

The ear hook may be worn on either ear. To switch sides, rotate the ear hook to the opposite side.

